



# Water Coolers



## REMOTE CHILLING PACKAGE

### R5

#### Model

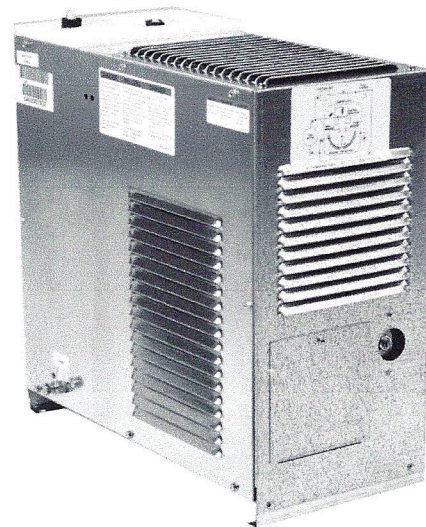
R5 is an efficient 5.0 gph chilling unit ideal for installations where it is necessary or desirable to have the cooling unit in an area remote from the drinking fountain.

#### Standard Features

- > Waterways are Lead-Free in Materials & Construction
- > May Be Used To Serve Multiple Drinking Fountains
- > Made of Heavy Gauge Steel
- > High-Efficiency Cooling Tank and Coil
- > Refrigerant R-134a
- > Product Certified to NSF/ANSI Standard 61, Annex G (AB1953)
- > Limited 5-Year Warranty

#### Installation

- > Easy to install
- > Prior to roughing-in, consult local, state and federal codes for proper mounting height.
- > Shipped with complete instructions



Components in this fountain are lead free as defined by the Safe Drinking Water Act Amendments of 1986, and the Lead Contamination Control Act of 1988.

**Limited 5-Year Warranty** (Continental limits of the United States and Canada): Five years on the sealed refrigeration system and most component parts. Detailed warranty certificate enclosed with each water cooler; sample available upon request.

**Export Warranty:** One year on component parts. Detailed warranty certificate enclosed with each drinking fountain; sample copy available upon request.

Product Certified to NSF/ANSI Standard 61, Annex G (weighted average lead content of  $\leq 0.25\%$ ) and is in compliance with California's Health & Safety Code Section 116875 (commonly known as AB1953).

Models covered by this specification comply with all known Plumbing Codes. Listed by Underwriters' Laboratories to U.S. and Canadian standards. Certified to ANSI/NSF 61 Section 9.



Certified to NSF/ANSI 61/Section 9

Model	50° F Drinking Water 90° F Ambient Air Temp*				115 Volts, 60 HZ			Glass Filler Acc. Option	Cabinet Color Finish	Net Wt. Approx.
	Rated Capacity GPH	Base Rate GPH	Pre-Cooler	Hot 'N Cold™ Model**	Compr. HP	Full Load Amps	Rated Watts			
R5**	5.0	5.0	n/a	No	1/5	3.6	4.5	n/a	n/a	50 Lbs.

\*Industry Standard Rating Condition 80°F inlet water temperature.

\*\*Special Export models available, operable on 220-240 volts, 50-60 Hertz. UL and CSA certification not applicable.

Specifications subject to change without notice

# OASIS® REMOTE WATER CHILLER MODEL R3, R5

